

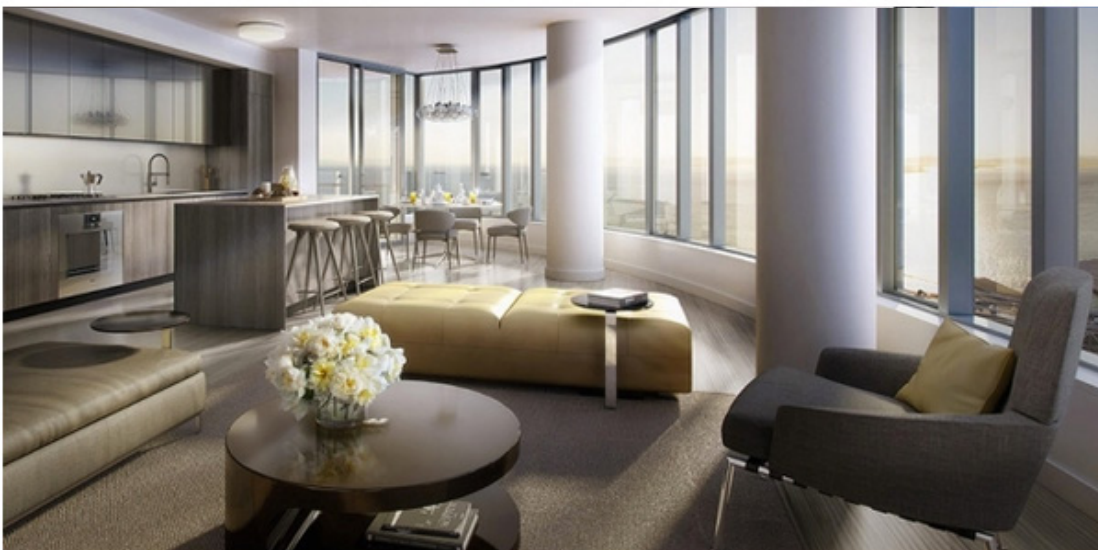
## Nearing Completion, Tishman Speyer's Lumina Graces The San Francisco Skyline

By *Philip Ferrato* / 06/10/15 at 11:50 am / [Comments](#)



Renderings by SteelBlue via Tishman Speyer

**Lumina** is nearing completion and the gleaming South Beach condominium project's tallest structure, Tower B opens this week for sales. Designed by the eminent architect Bernardo Fort-Brescia of Arquitectonica for developer Tishman Speyer, the project sets new standards for space, finishes and amenities in the San Francisco condominium market, and thus far, forty percent of the units in the project are in contract. Residents will begin moving into the Main Street Plaza A building in August. The upper floors of the two high-rise towers have sweeping views of the city and Bay, and we're loving the expansive layout of this 3-bedroom unit on the 37th floor.



## Tishman Speyer's Lumina Graces the San Francisco Skyline Continued



Below, a rendering of a lower-floor unit. Along with impeccable finishes throughout the project, the thoughtfully detailed units will have Nest® thermostats to control the interior environment.



The four towers (two mid-rise and two high-rise) are arranged on a landscaped podium with extensive amenities, like a two-level residents' lounge and private dining room.

## Tishman Speyer's Lumina Graces the San Francisco Skyline Continued



Below, the luxe, skylit fitness center and pool. No mere condo gym, there's a spa, a yoga studio, and a rock-climbing wall along with a landscaped terrace for residents with barbecues and plans for outdoor film screenings.

## Tishman Speyer's Lumina Graces the San Francisco Skyline Continued



**More:** Check out the amenities and floor plans of the studio, 1-bedroom, 2-bedroom and 3-bedroom units at the Lumina [website](#) where you can also navigate through the views from different floors.

**Lumina Sales Gallery**  
**289 Main Street, San Francisco**